



International PROFILES Conference, Berlin  
2012

## How to involve Stakeholders in IBSE Networks

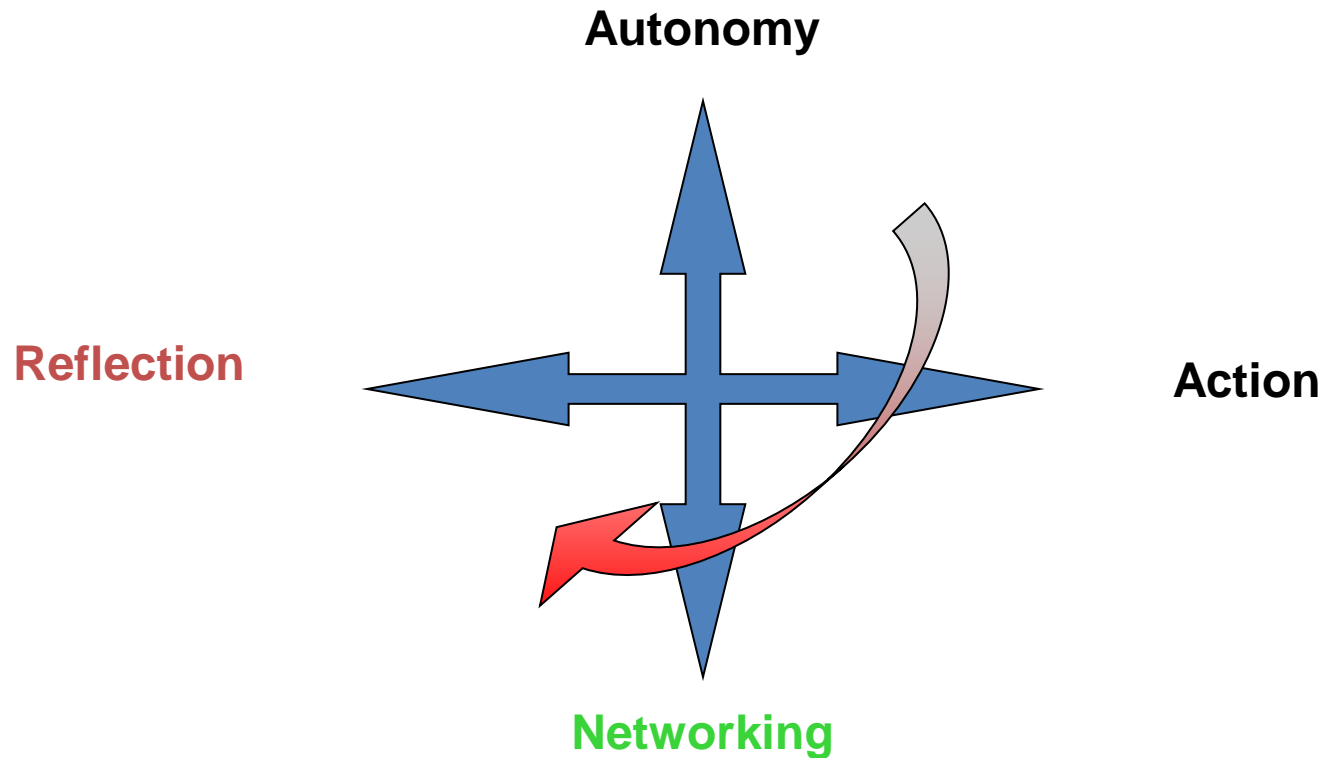
**Franz Rauch, Alpen-Adria University Klagenfurt (Austria)**

# Professional Development

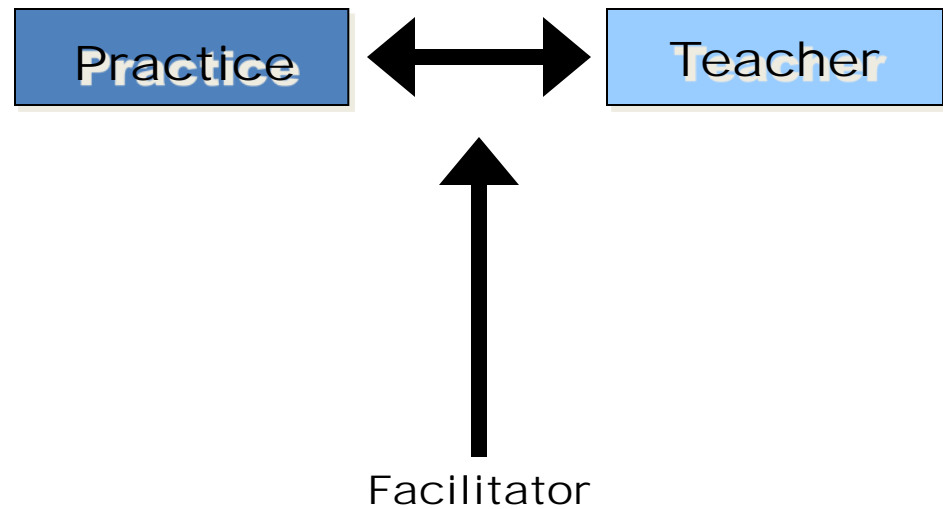
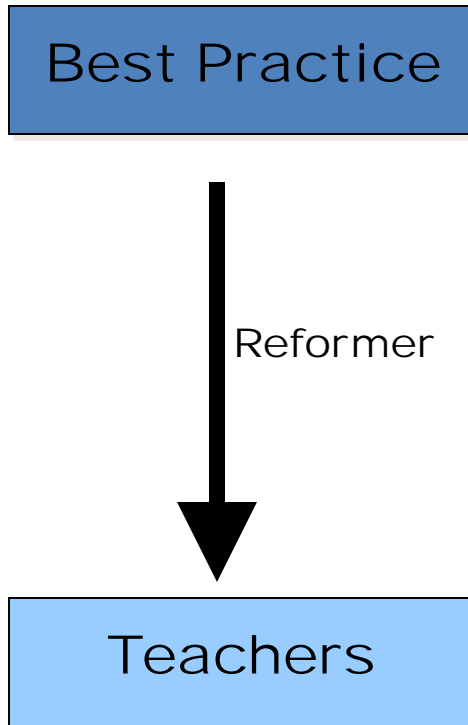
PROFILES



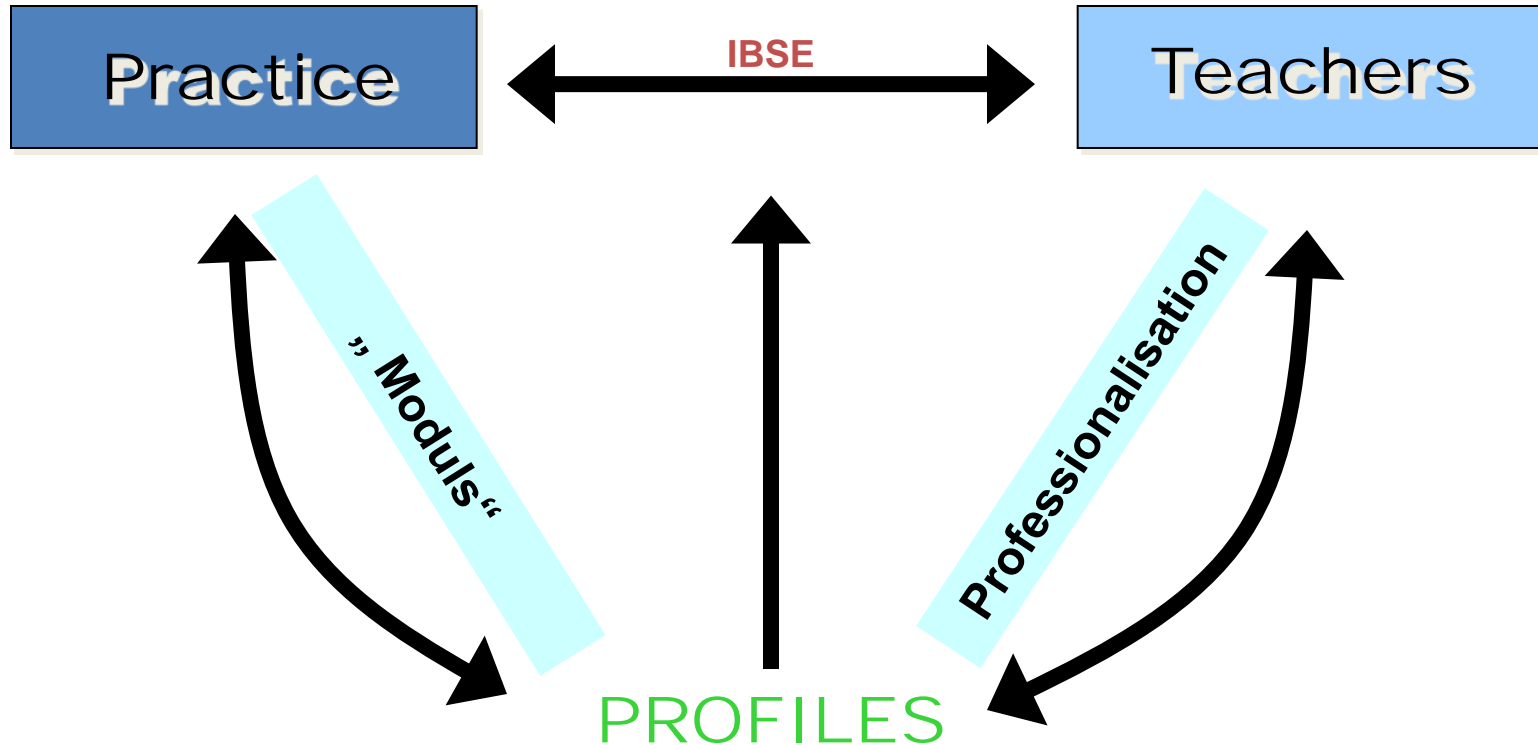
Professional Reflection Oriented  
Focus on Inquiry-based Learning  
and Education through Science



# Intervention Models



# Facilitating and Investigating

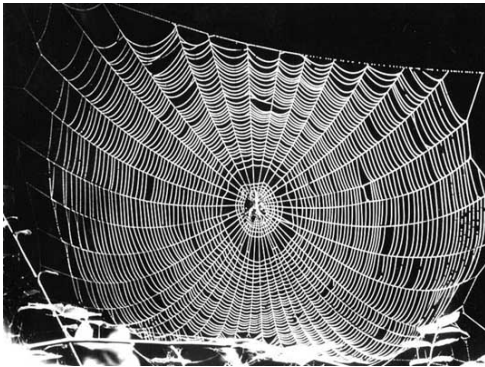


# Dissemination & Networking

## Content – Community – Context

- **Content:** relevant to students, teachers, stakeholders (PROFILES activities)
- **Community:** exchange, ideas, learning ...
- **Context:** frame conditions, support ...

# Images of Networks



*„Our network is a spider-net  
which consists of many knots  
and connections in which  
information can flow.“*



*„Networks are illuminated cristalls which  
foster resonances at schools.“*

## Images of Networks



*„ All schools in a region  
should participate“*

## Functions of Networks (Dalín 1999)

- **information:** direct and immediate exchange of relevant information about teaching and learning
- **learning:** extended learning opportunities by mutual exchange
- **political function:** co-operation with likeminded people foster dissemination and implementation of innovations
- **psychological function:** possibilities of co-operation and trust strengthens people („risk-taking“)



# Information Function – Dissemination Content

- PROFILES Homepage and Partner Homepages
- PROFILES Newsletter and Book
- Publication and seminars on local/regional/national levels
- Other forms of local publicity, i.e. media, local school authorities, museums/science centers

# Principles of Development of Networks

- building upon existing personal, institutional and material resources/channels and already existing networks
- Involve local stakeholder
- people in the province/region/country are responsibility for the development of their network

# PROFILES Networking – Starting Point (2011)

PROFILES  
Professional Reflection Oriented  
Focus on Inquiry-based Learning  
and Education through Science

# Inter-linked Types of Networks

- Networks at School
- School Networks
- Local or Regional Networks
- National Networks
- International Networks

# Networks at School

- Teachers co-operate in a school
- Support at school and from outside
- Steering group at school
- Instructional and School development through science/IBSE
- ...

# School Networks

- 2-3 schools work together
- Exchange and support
- joint projects
- Establishing steering structure
- Establishing partnerships (with community, science, businesses ...)
- Dissemination of PROFILES information

# Local or Regional Networks

- Partnership within one school district/region
- Exchange of experiences in network seminars
- Joint projects among science teachers
- Local/regional co-ordination group
- Involvement of local stakeholders (education, administration/politics, business, NGOs ...)

## National Networks

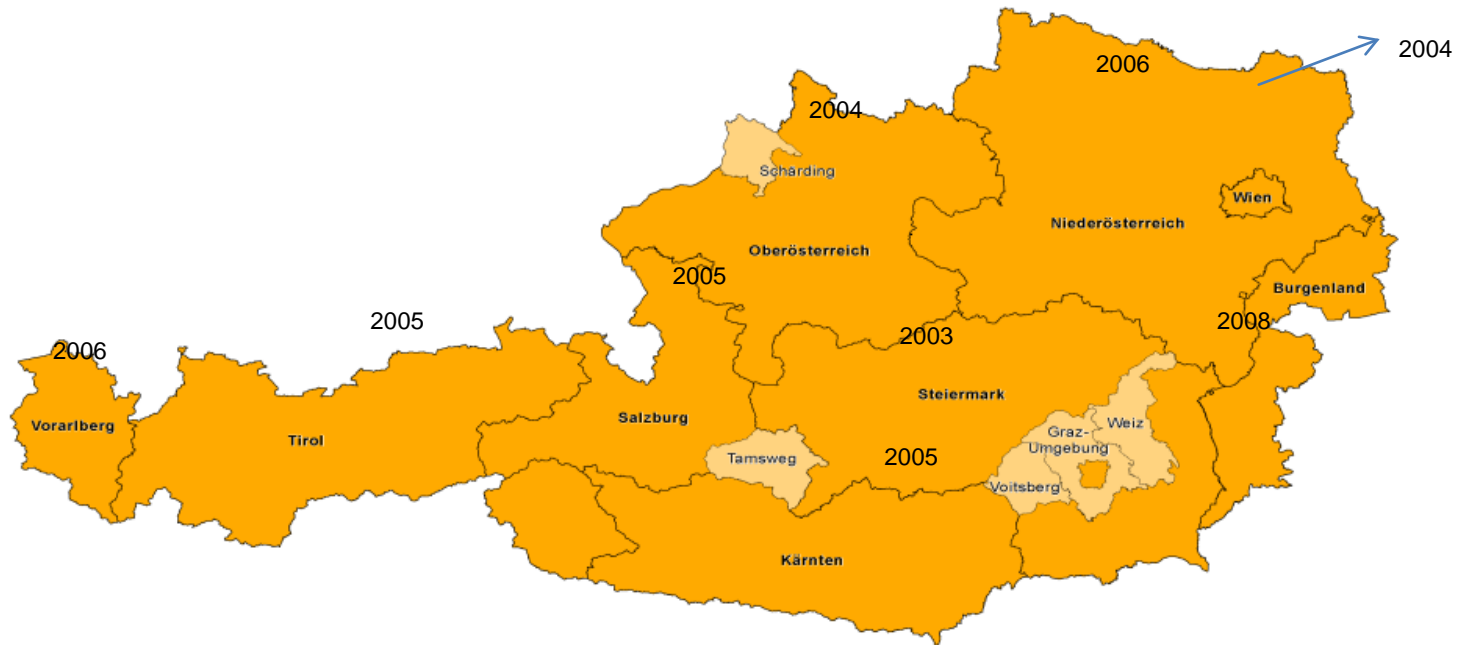
- Nation-wide scope of the program
- National co-ordination structure
- Network conferences
- Newsletter ...

## International Networks

- co-operation/synergies with international networks (i.e. ICASE, other EC Project)
- International meetings/seminars/plattforms



# Development of Regional and Local Networks in Austria



# Regional and Local Networks

- regional steering structure consisting of teachers, representatives of school administration, teacher education, local government, businesses
- - offer a communication platform for teachers (and stakeholders)  
- activities (i.e. seminars, conferences, support of networks at schools ...)
- - co-ordinators exchange experiences among each-other  
- resources from different sources

# Some Lessons Learned

- Sharing counts
- Good practice cannot be cloned
- Start with small steps
- Co-ordination and support
- *Action & Reflection*
- Climate of trust
- Regional/national contexts counts



Thank you for your attention!

[franz.rauch@aau.at](mailto:franz.rauch@aau.at)